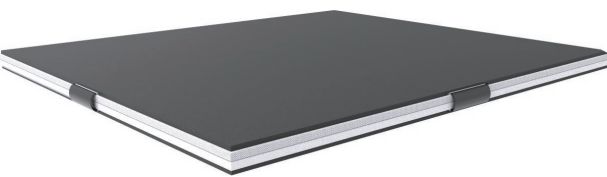


Genshin slider



Model number by size

【FGS-100】100 x 100 (mm)

【FGS-200】200 x 200 (mm)

【FGS-300】300 x 300 (mm)

【FGS-500】500 x 500 (mm)

【FGS-910】910 x 910 (mm)

FGS series

Size/weight	100mmx100mm(0.25kg), 200mmx200mm(1kg) 300mmx300mm(2kg), 500mmx500mm(5kg) 910mmx910mm(18kg)
Performance of base isolation	Any shaking of the major earthquakes is reduced to approximately 250gal or less. (Excluding vertical motion)
Minimum required load	50kg
Maximum loading capacity	2.2tons/㎡ (load on plane surface)
Maintenance	No maintenance required
Guarantee	1 year from delivery

* We do not provide any guarantee for the loaded items. Specifications are subject to change without notice.

NFGS series

Size/weight	320mmx320mm(3.5kg), 420mmx420mm(6.2kg) 520mmx520mm(9.5kg)
Performance of base isolation	Any shaking of the major earthquakes is reduced to approximately 200gal or less. (Excluding vertical motion)
Minimum required load	50kg
Maximum loading capacity	2.2tons/㎡ (load on plane surface)
Maintenance	No maintenance required
Guarantee	1 year from delivery

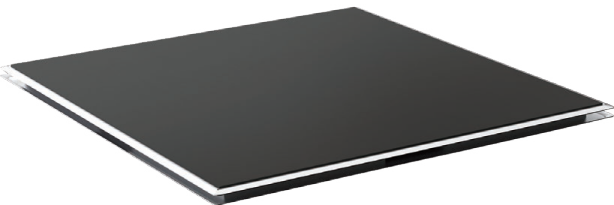
* We do not provide any guarantee for the loaded items.Specifications are subject to change without notice.

Model number by size

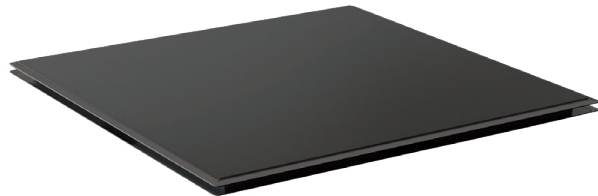
【NFGS-320 (H)(S)】320 x 320 (mm)

【NFGS-420 (H)(S)】420 x 420 (mm)

【NFGS-520 (H)(S)】520 x 520 (mm)



High corrosion-resistant steel sheet (H)



Coated steel plate (S)

Notes

- Genshin Slider reduces the horizontal movement occurred by earthquake that is the cause of overturning. Genshin Slider does not correspond to vertical movement occurred by earthquake, mechanical vibration nor any vibration that is not causing overturning.
- Genshin Slider is the equipment that reduces the risk of overturning by earthquake; but is not the one that guarantees for no damage.
- To apply Genshin Slider, moveable range during earthquake is necessary. Keep away any item that may disturb the designated moveable range.
- After the powerful earthquake (over Shindo 5 (lower)), it is invariably necessary to check the situation of the load.
- There is the possibility of residual displacement (slide) of Genshin Slider after the powerful earthquake.
- Avoid from pushing Genshin Slider carelessly while loading. There is the possibility of unexpected movement.
- There is the possibility of not functioning due to the flaw and obstacle at groundwork (free access floor, slab).
- When relocating or diverting, it is recommendable for product inspection and part replacement including cleaning.
- Regarding about unclear point or question, please do not hesitate to contact us.

We will provide the customized design based on your requirement.
Please feel free to contact us.

 **FORVICE** Nihon Form Service Co., Ltd.

URL: <https://www.forvice.co.jp> E-Mail: info@forvice.co.jp

Head office Forvice Building, 6-25-1 Kametido, Koto-ku, Tokyo 136-0071, Japan
Tel: +81-3-3636-0011 Fax: +81-3-3636-0088

Kansai Office 5-6-12 Tanimachi, Chuou-ku, Osaka, Osaka Prefecture 540-0012, Japan
Tel: +81-6-6767-7771 Fax: +81-6-6767-7772

Chiba Factory 1-4 Nagayamadai, Yokoshibahikari, Sanbu District, Chiba Prefecture 289-1751, Japan
Tel: +81-479-82-2121 Fax: +81-479-82-0700

[Notes on product specifications]

• The product information is as of Nov, 2022.

• In order to improve quality and safety, product specifications are subject to change without notice.



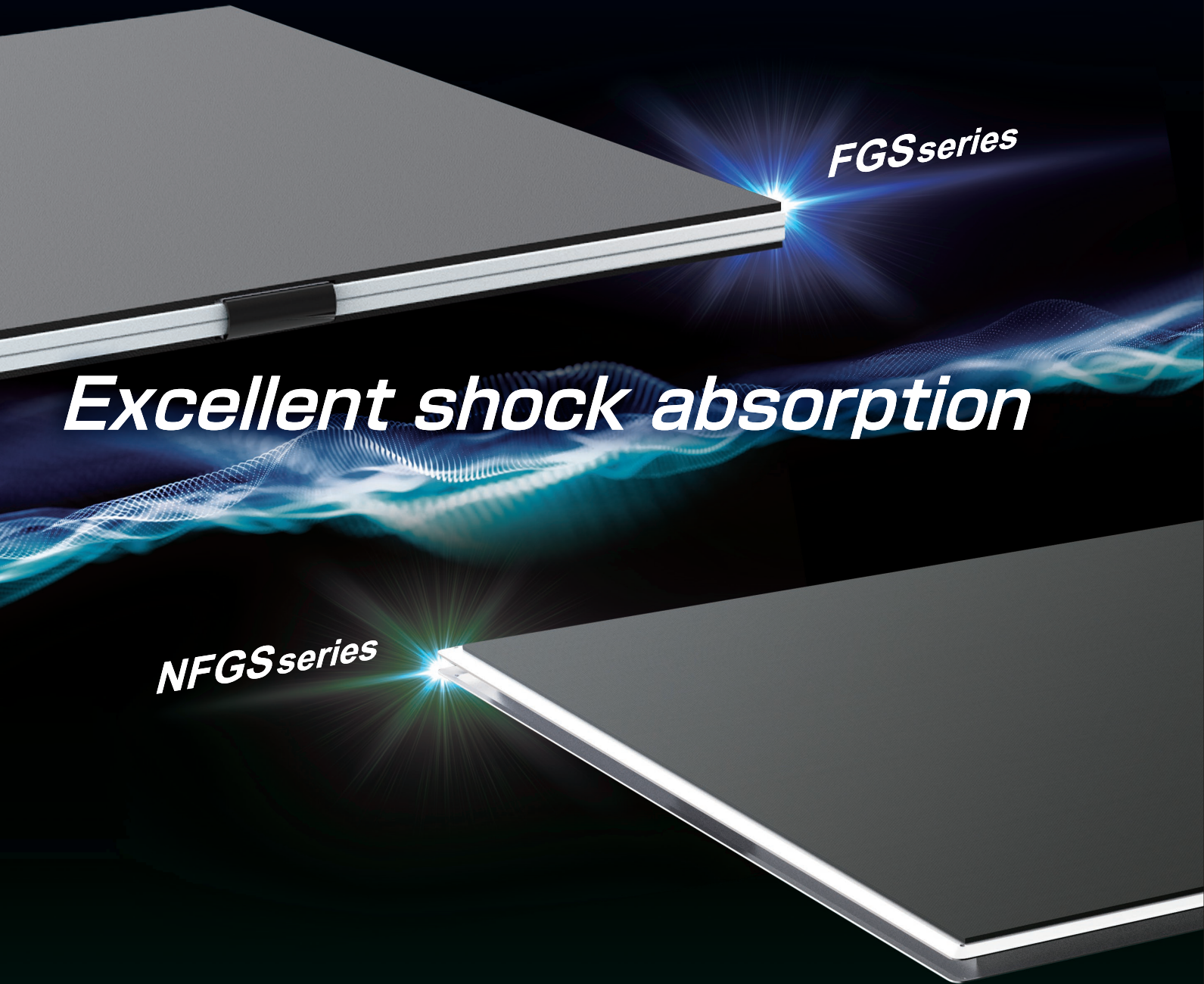
showroom at our Head office

Please contact us if you want to have the showroom tour.

slim type & high performance
Super elastic rubber band



Genshin Slider

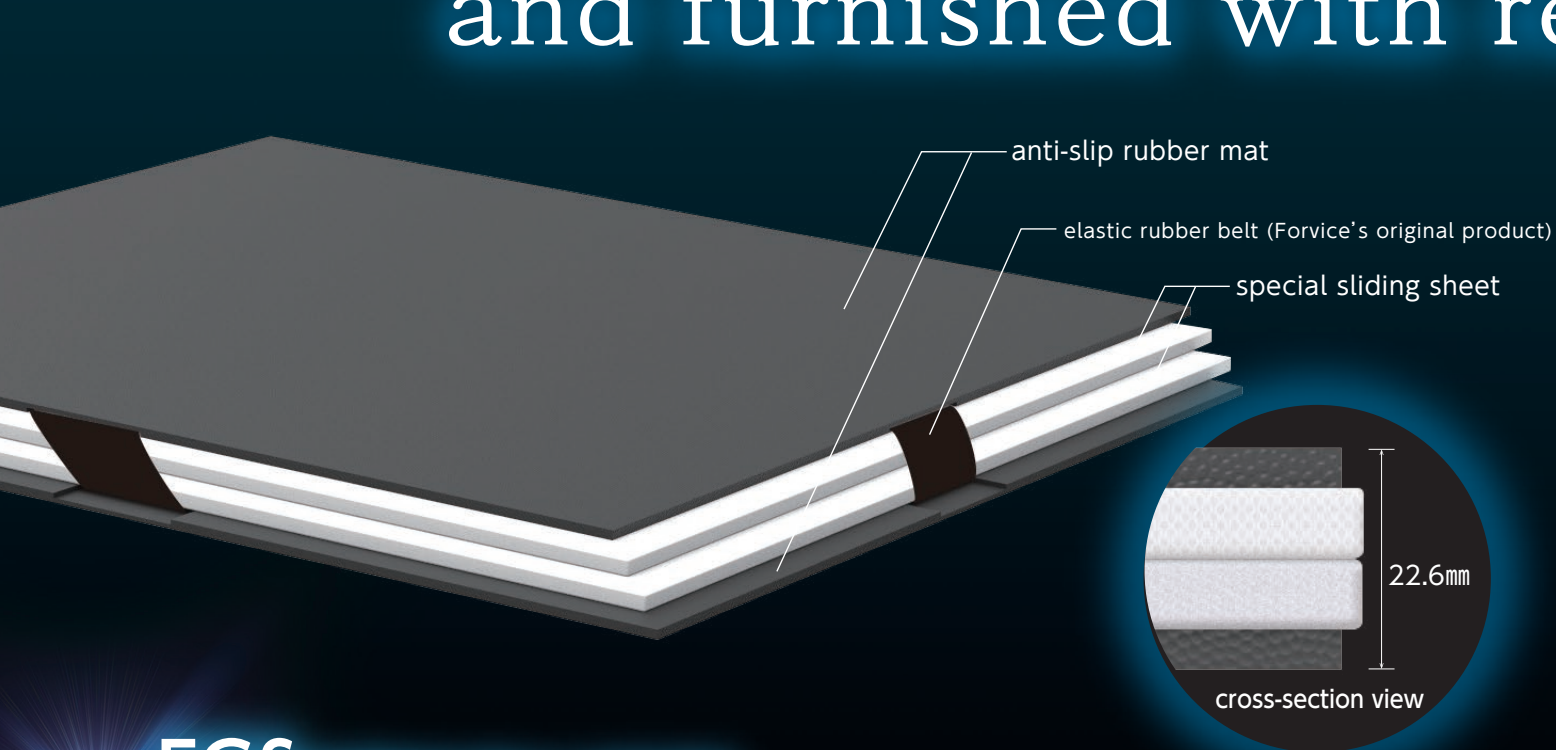


Patent No.6132224

Technical examination certificate BL Examination Certificate-007

MLIT New Technology Information System (NETIS) Registration No.: KT-130006-A

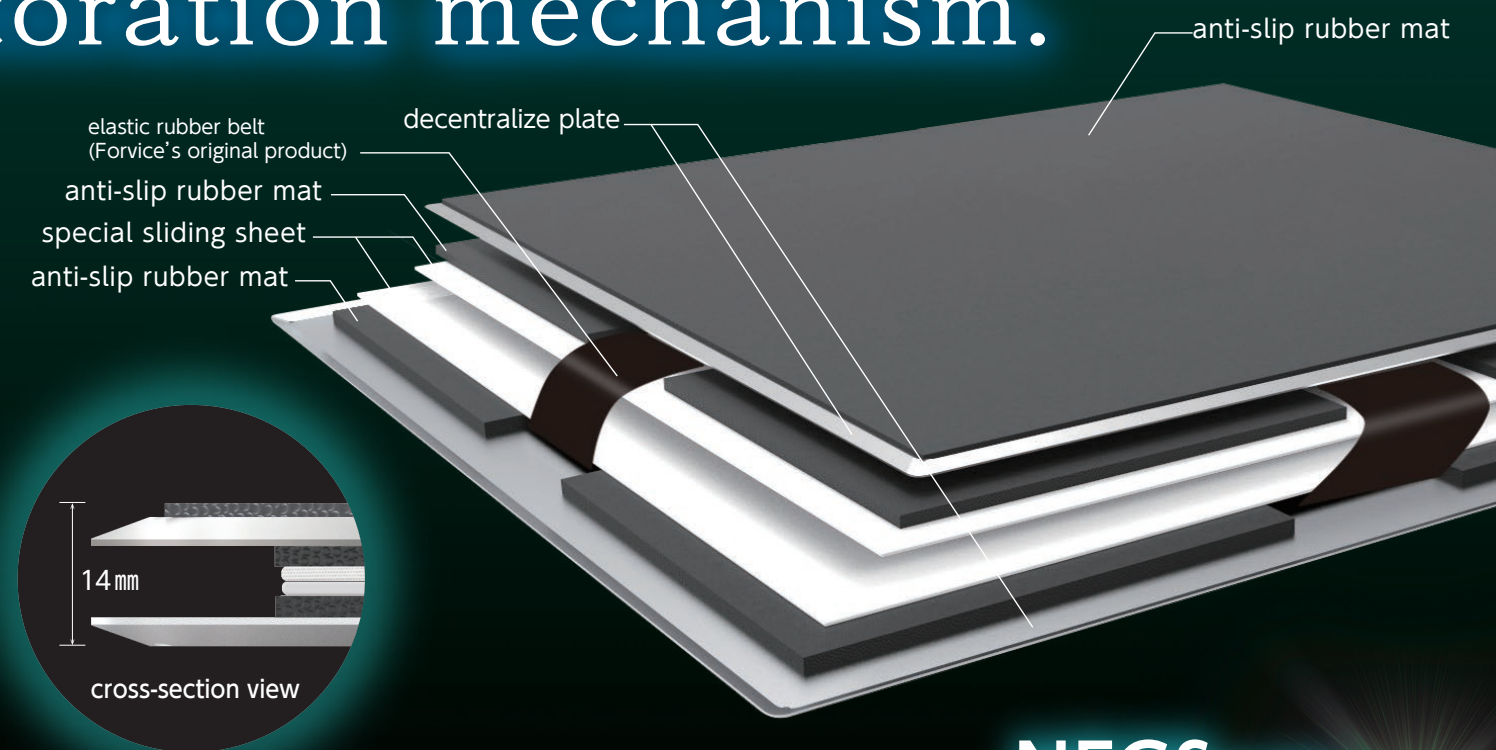
Light Weight, easy to install and furnished with restoration mechanism.



FGs series (outdoor applicable) * Should not expose outdoor without load.

Bearing function **Restoration function** **Attenuation function**

- Sliding friction of "special sliding sheet" reduces the impact of earthquake
- Elastic rubber belt is used for returning to origin after earthquake
- Earthquake response acceleration is reduced to 250gal
- Load distribution base is available (optional)



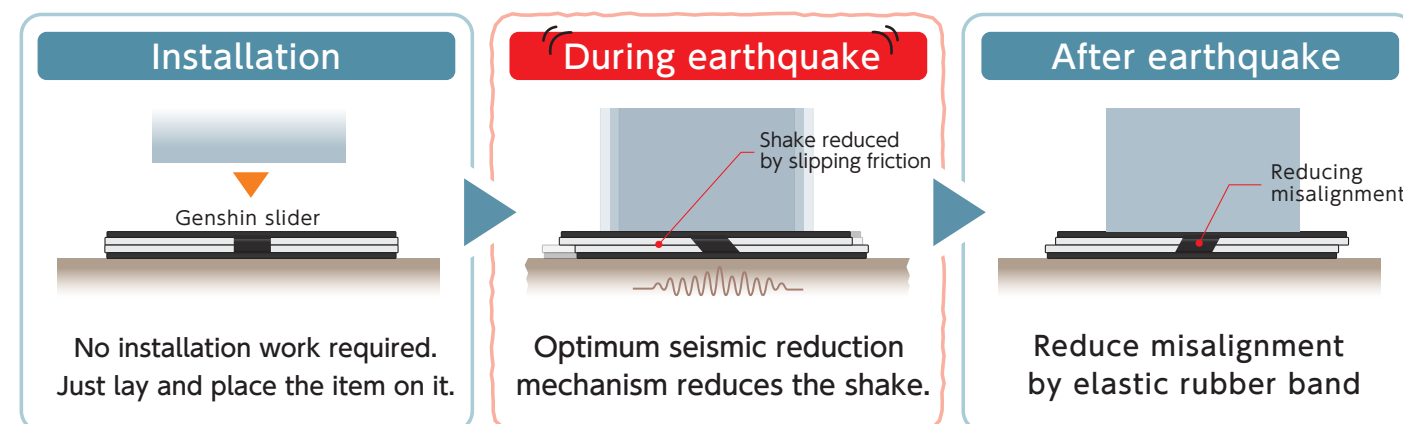
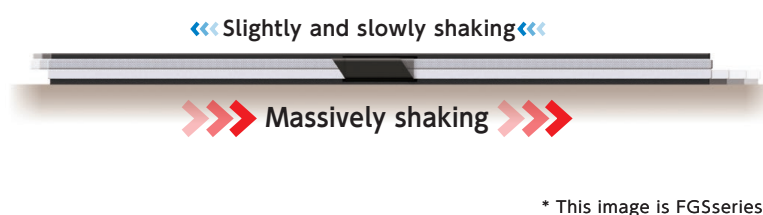
NFGs series

Bearing function **Restoration function** **Attenuation function** **Fire resistance**

- Slim model with 14mm thickness in total.
- Elastic rubber belt is used for returning to origin after earthquake.
- Sliding friction of "special sliding sheet" reduces the impact of earthquake.
- Earthquake response acceleration is reduced to 200gal.

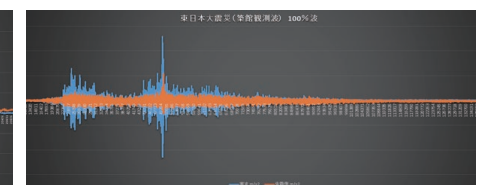
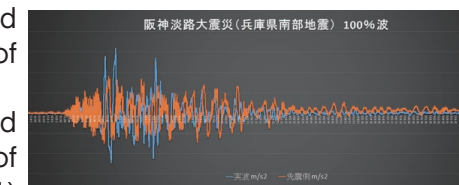
Mechanism of Genshin Slider

Sliding friction of the special sheet reduces the shake occurred by earthquake. Our company's original product, elastic rubber belt, absorbs impulsive force and makes smaller residual displacement. Natural period of elastic rubber belt is set over 3 seconds and it protects against the possibility of resonance with the prominent cycle of earthquake (0.2~2 seconds)



Vibration Test (3D vibration table at MTI)

Work effectively for both short and long period ground motions of earthquake. No overturning nor damage occurred by testing with 100% Seismic wave of Great East Japan Earthquake (2011) and that of Great Hanshin Awaji Earthquake (1995).



Various Applications

Highly effective earthquake countermeasure with Genshin Slider.

